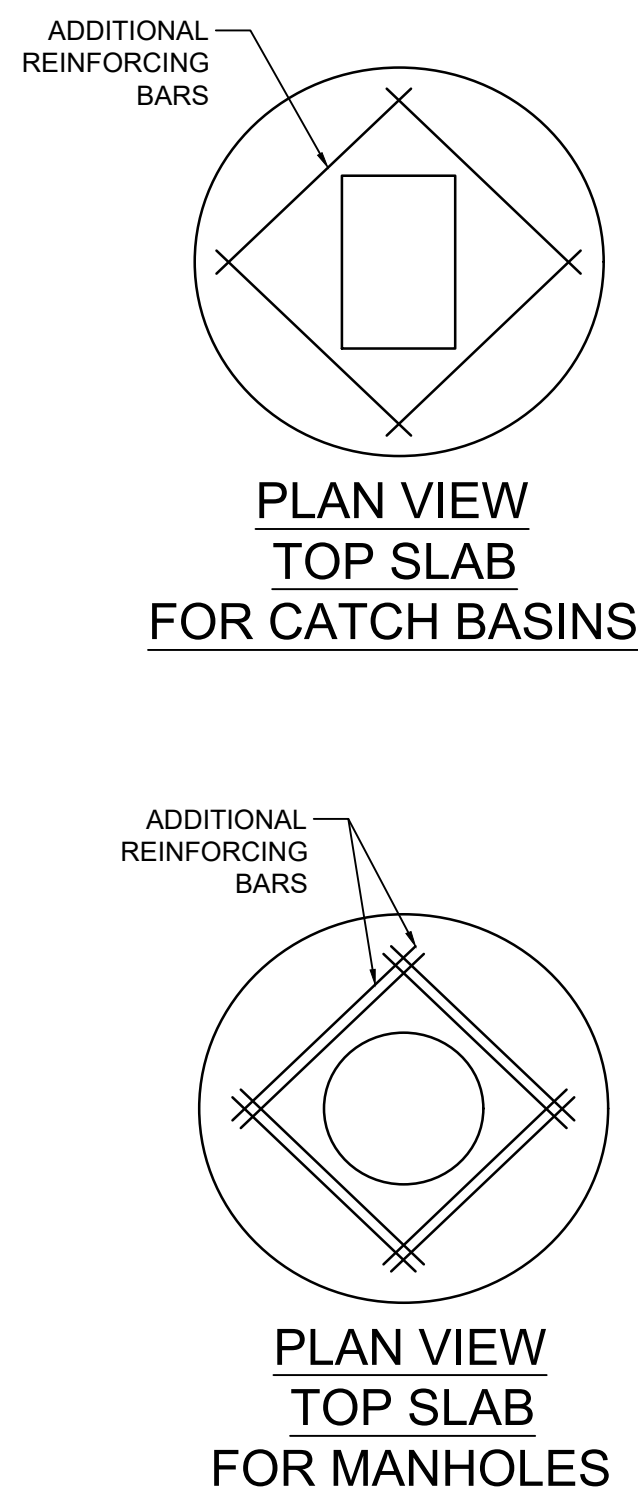


**CATCH BASIN / DRAINAGE
MANHOLE DETAIL**

12

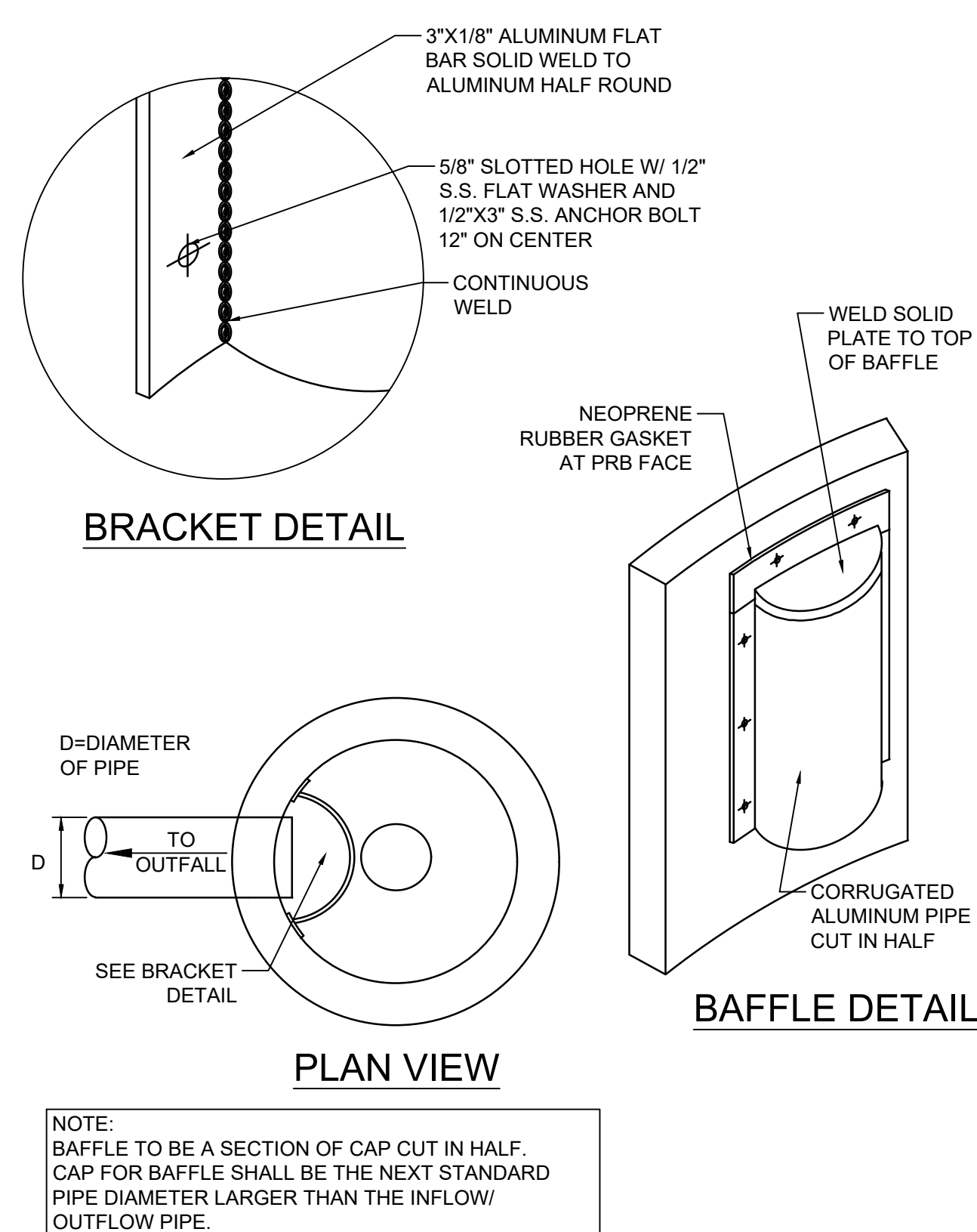
NOT TO SCALE



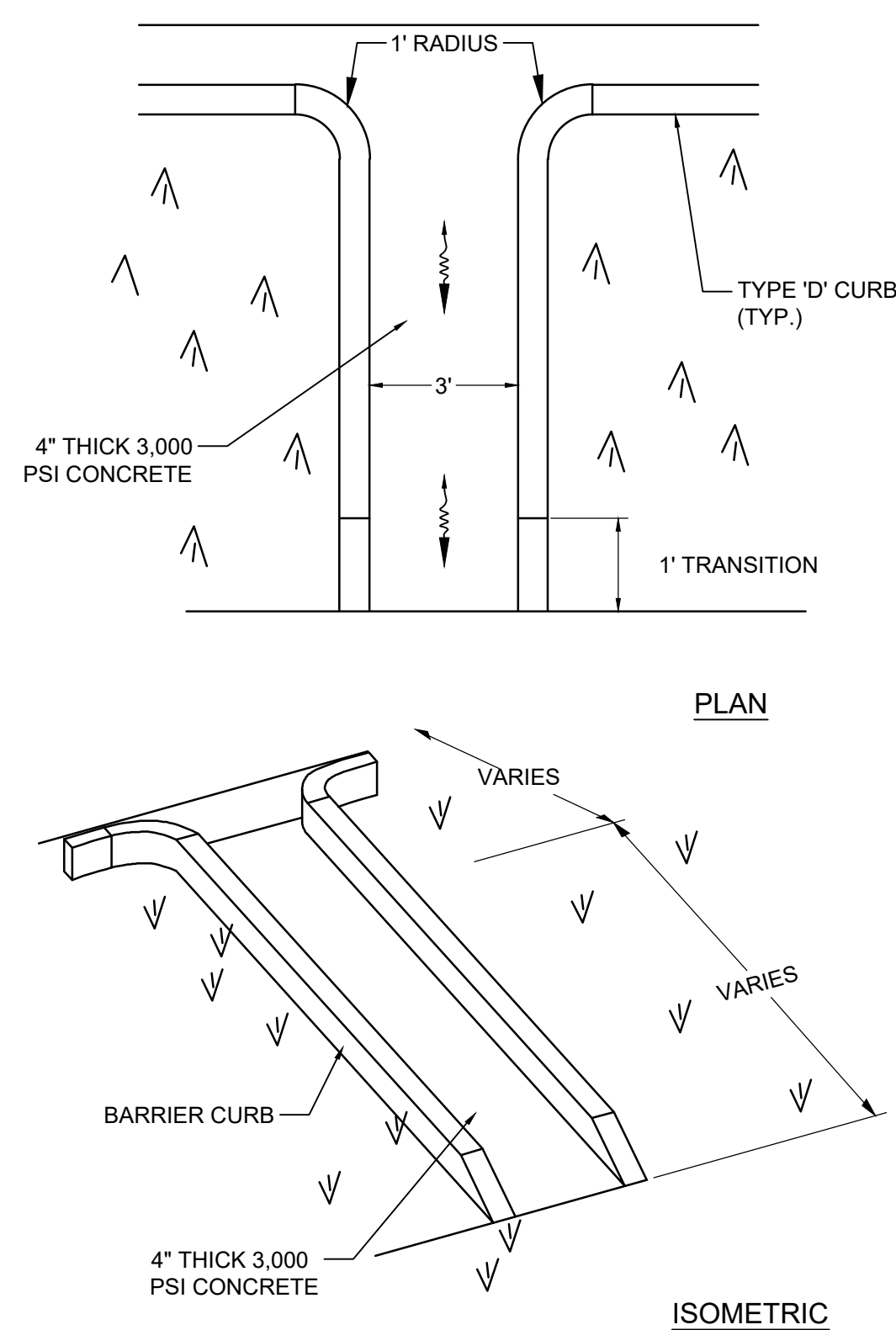
CATCH BASIN / MANHOLE
FRAME DETAIL

13

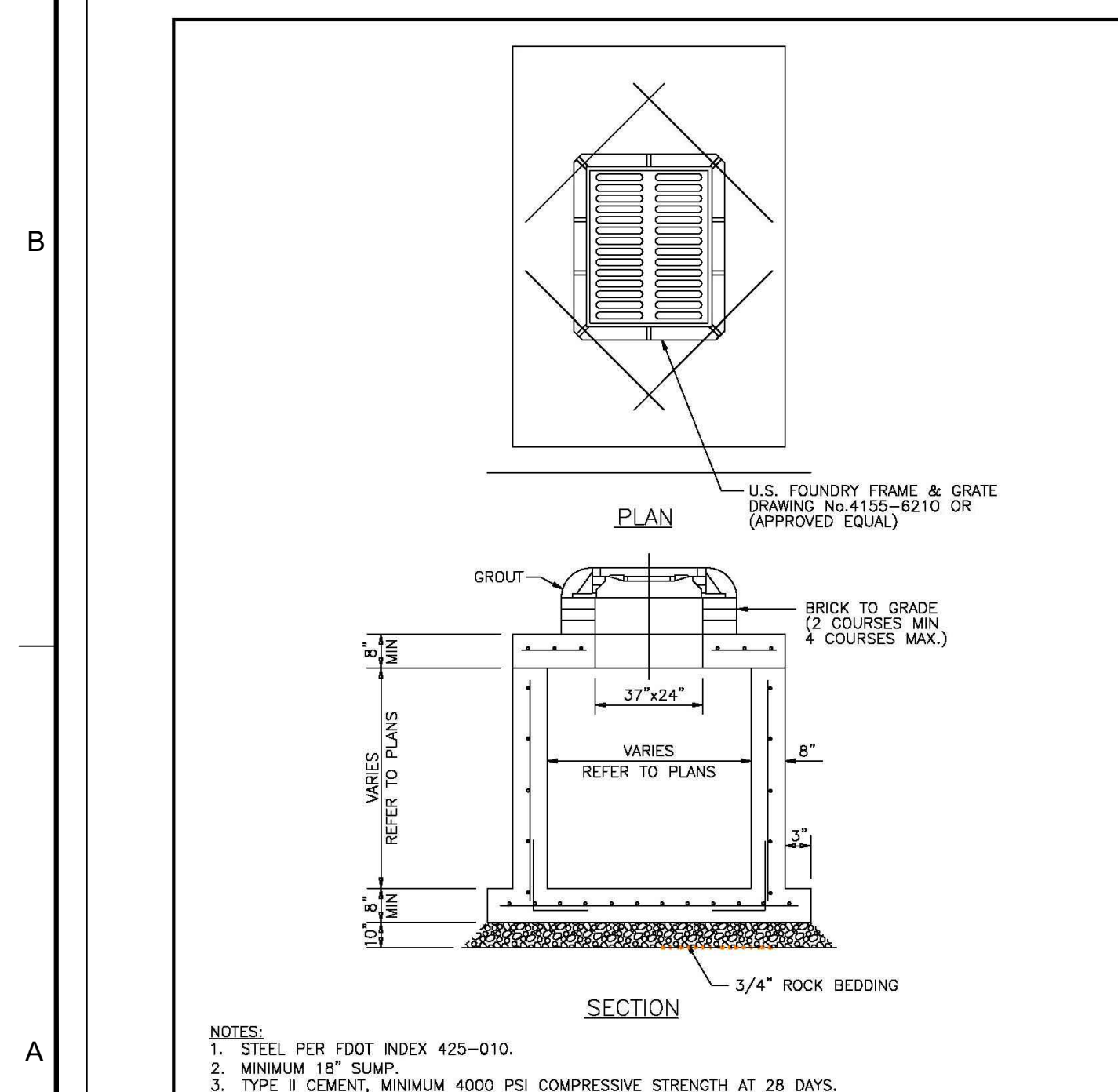
NOT TO SCALE



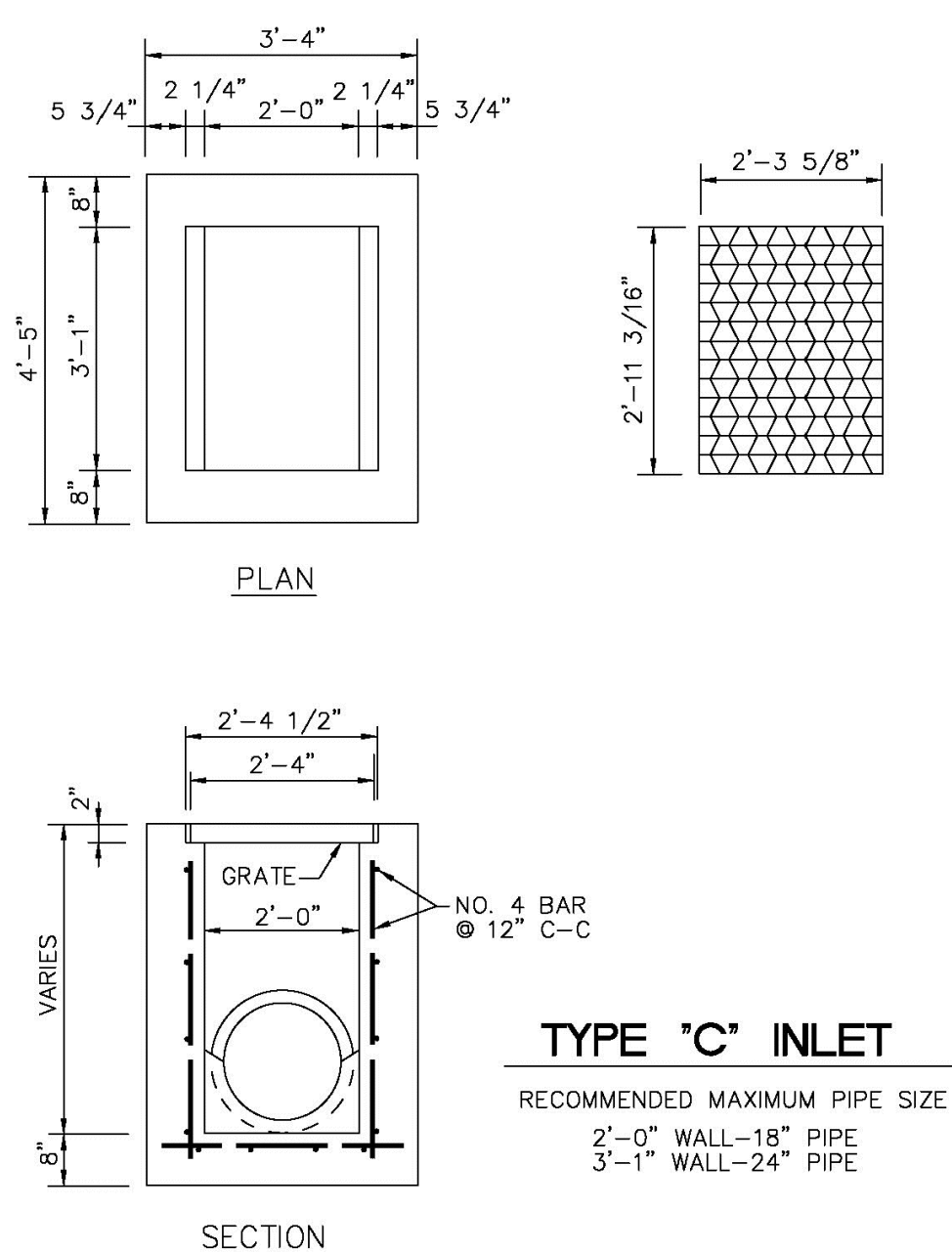
14 POLLUTION RETARDANT
BAFFLE DETAIL



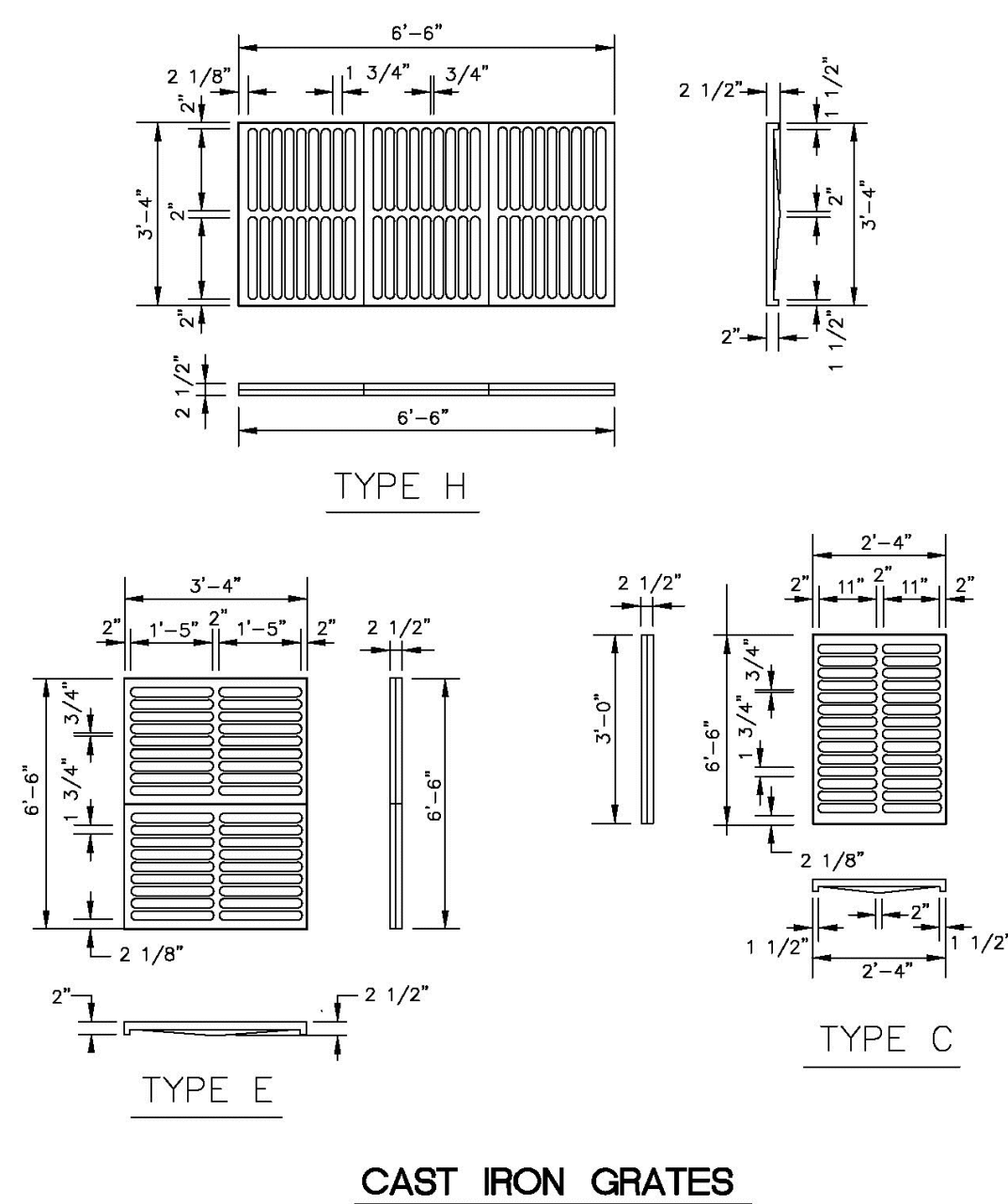
15 CONCRETE FLUME DETAIL



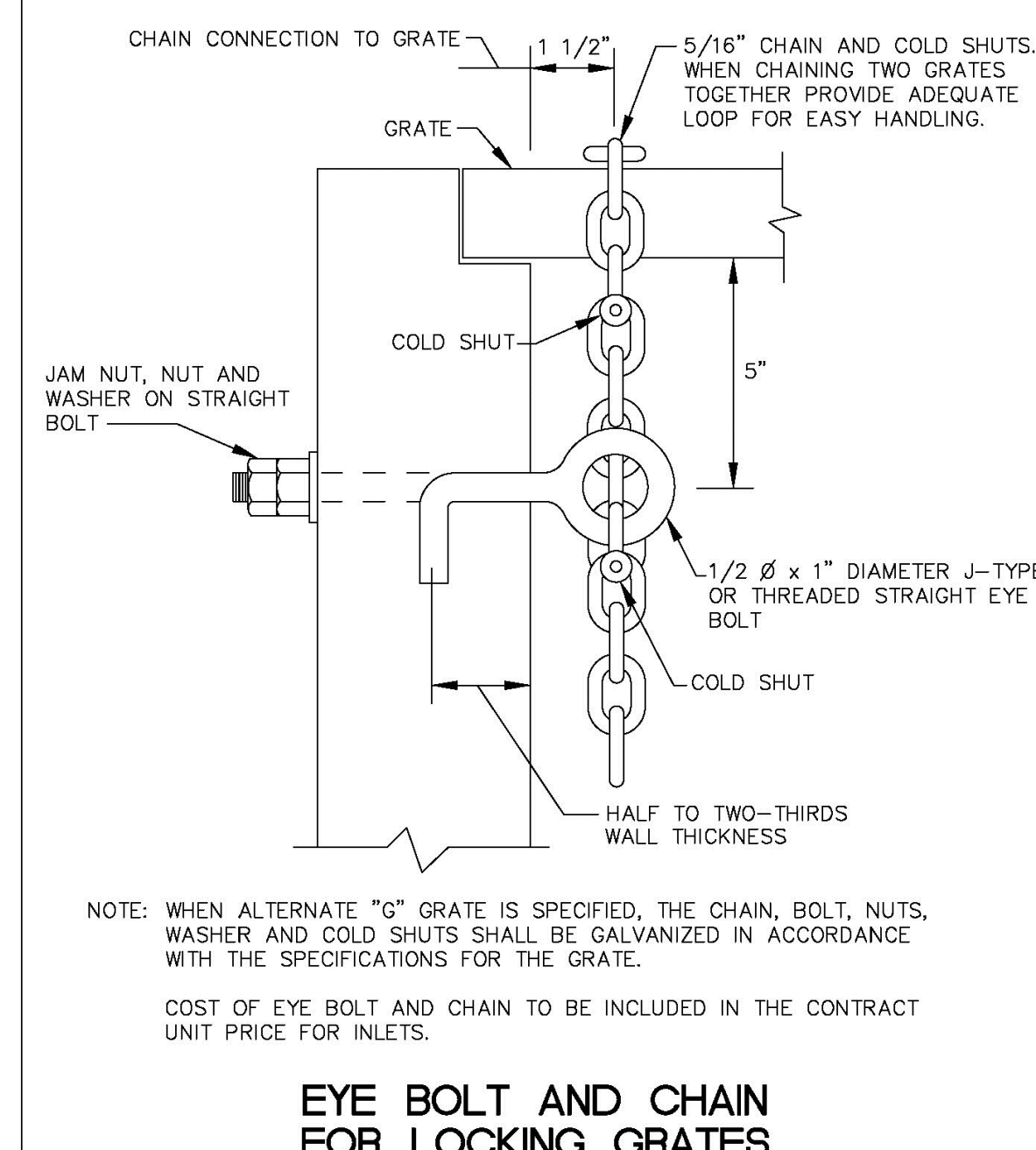
ENGINEERING STANDARDS 2025			
REVISIONS		ENGINEERING DIVISION CITY OF POMPANO BEACH	PRECAST DRAINAGE STRUCTURE
BY	DATE		
A.S.	04-24		DATE: APRIL 2024 DWG. NO. 400-1A
		SCALE: N.T.S.	



ENGINEERING STANDARDS 2025			
REVISIONS		ENGINEERING DIVISION CITY OF POMPAÑO BEACH	TYPE "C" INLET
BY	DATE		
S.S.	09-11		DATE: JUNE 2022 DWG. NO. 400-1B
		SCALE: N.T.S.	



ENGINEERING STANDARDS 2025			
REVISIONS		ENGINEERING DIVISION CITY OF POMPANO BEACH	CAST IRON GRATES
BY	DATE		
		SCALE: N.T.S.	DATE: JUNE 2022 DWG. NO. 410-1



ENGINEERING STANDARDS 2025			
REVISIONS		ENGINEERING DIVISION CITY OF POMPANO BEACH	EYE BOLT AND CHAIN
BY	DATE		
		SCALE: N.T.S.	DATE: JUNE 2022 DWG. NO. 413-1

[illegible]

PRELIMINARY PLAN
NOT FOR CONSTRUCTION

**THESE PLANS ARE NOT FULLY PERMITTED
AND ARE SUBJECT TO REVISIONS MADE
DURING THE PERMITTING PROCESS.**

RESPONSIBILITY FOR THE USE OF THESE
PLANS PRIOR TO OBTAINING PERMITS FROM
ALL AGENCIES HAVING JURISDICTION OVER
THE PROJECT WILL FALL SOLELY UPON THE
USER.

ISSUE DATE:	11/12/2025
-------------	------------

DESIGNED BY: NW

DRAWN BY:	FA
-----------	----

CHECKED BY: NW

BID-CONTRACT:

NILES T. WARRICK, P.E.
FLORIDA REG. NO. 94320
(FOR THE FIRM)

CLIENT

JADIAN IOS

PROJECT

**951 SW 12th AVENUE
POMPANO BEACH FL**

SHEET TITLE

PAVING, GRADING, AND DRAINAGE DETAILS

SHEET **CP-502**
NUMBER

PROJECT NUMBER	15427.00
----------------	----------